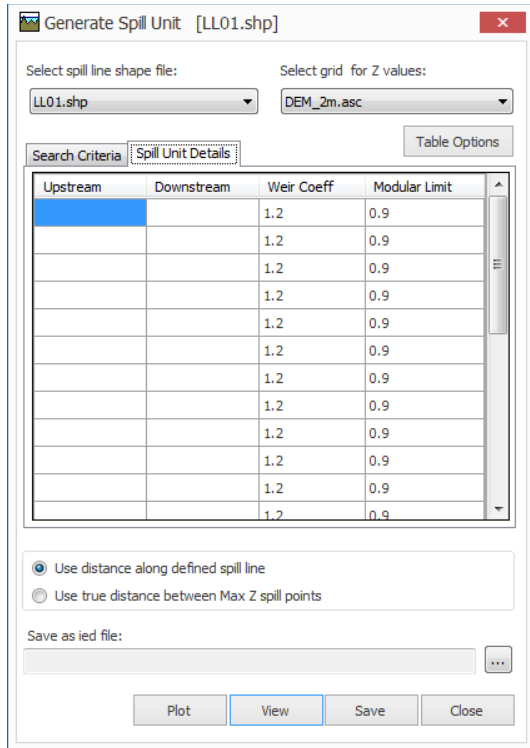
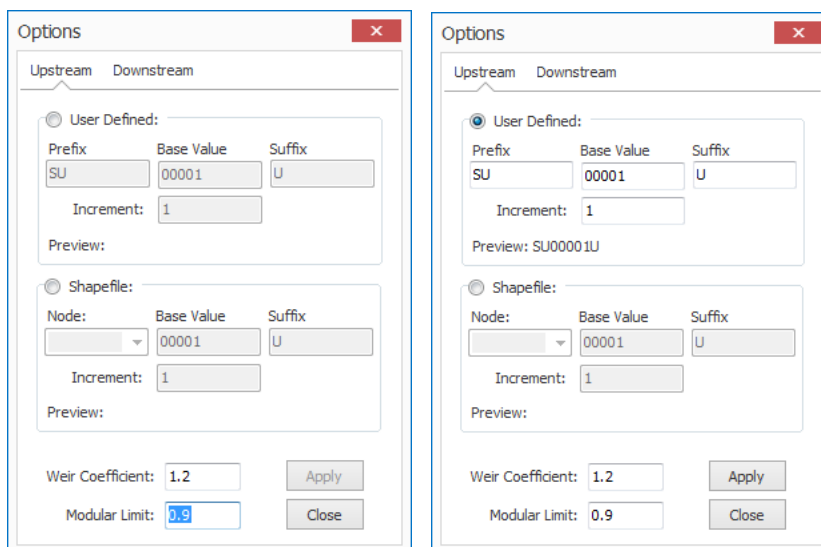


Generate 1D Spill Units

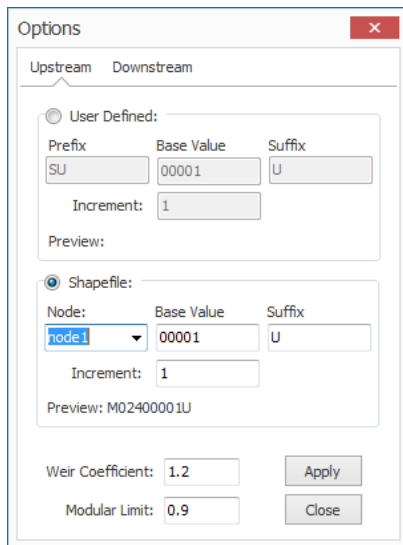
The Spill Generator tool contains a new method for population upstream and downstream node labels. On the 'Spill Unit Details' tab there is a new 'Table Options' button.



The 'Options' dialog window allows the user several configurable options to set the upstream and downstream labels. The 'User Defined' choice allows the user to define a label based on a 'Prefix', a 'Base Value' and a 'Suffix'. The 'Prefix' and 'Suffix' are both optional fields but the label must contain a 'Base Value'.

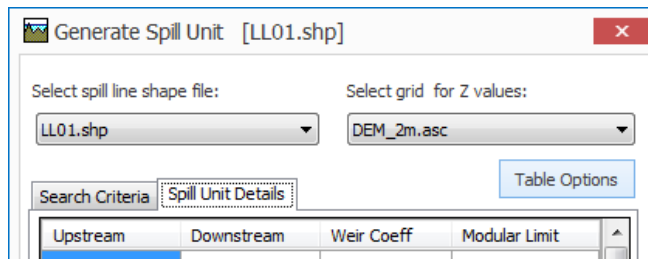


The 'Shapefile' option allows the user to choose to use any of the attributes from the Shapefile. This label, similarly to the 'User Defined' label, is based upon a 'Node', a 'Base Value' and a 'Suffix'. The 'Node' and 'Suffix' are both optional values.

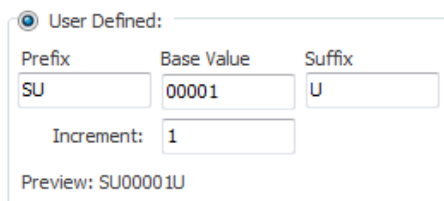


UC001: Update Upstream or Downstream Node Labels (User Defined)

1. Select the 'Spill Unit Details' tab and press the 'Table Options' button.



2. The 'Options' dialog displays the options for configuring the Upstream and Downstream node labels and the global edit of the Weir Coefficient and Modular Limit.
3. Choose either the 'Upstream' or 'Downstream' tab on the 'Options' dialog.
4. Select the 'User Defined' radio button to activate the input boxes:



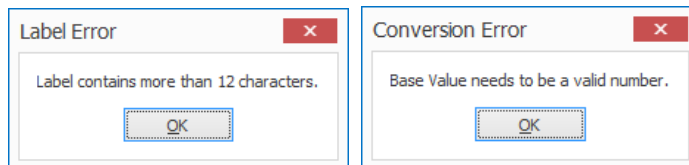
5. Enter an optional 'Prefix' value, a 'Base Value' and an optional 'Suffix' value.

NB: The 'Base Value' is required for the label display and the validation method will prompt a user to input a number if this value is missing or of the incorrect form.

6. Set the 'Increment' number or leave the default value (1).
7. Press the 'Apply' button to set the node label values on the Spill Unit Details tab.

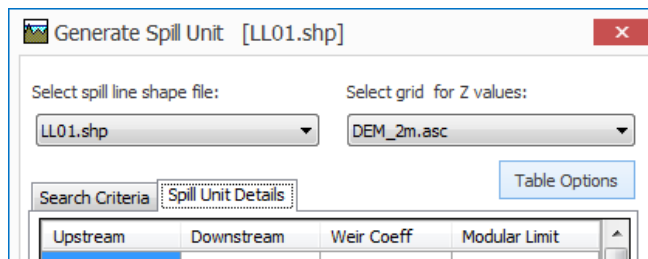
Upstream	Downstream
SU00001U	
SU00002U	
SU00003U	
SU00004U	
SU00005U	

NB: When the 'Apply' button is pressed a validation method is executed to ensure that the label length is a maximum of 12 characters and that the input values are of the correct form. This is to ensure that the labels are displayed correctly within Flood Modeller.



UC002: Update Upstream or Downstream Node Label (Shapefile)

1. Select the 'Spill Unit Details' tab and press the 'Table Options' button.



2. Choose either the 'Upstream' or 'Downstream' tab on the 'Options' dialog.
3. Select the 'Shapefile' radio button to activate the input boxes:

Shapefile:

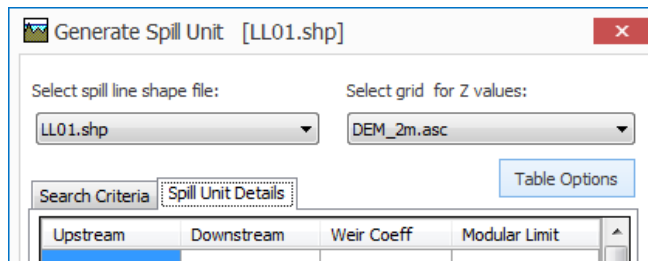
Node:	Base Value	Suffix
<input type="text" value=""/>	<input type="text" value="00001"/>	<input type="text" value="U"/>
Increment:	<input type="text" value="1"/>	
Preview: 00001U		

4. Choose an optional 'Node' value, a 'Base Value' and an optional 'Suffix' value.
5. Set the 'Increment' number or leave the default value (1).
6. Press the 'Apply' button to set the node label values on the Spill Unit Details tab.

NB: When the 'Apply' button is pressed a validation method is executed to ensure that the label length is a maximum of 12 characters and that the input values are of the correct form. This is to ensure that the labels are displayed correctly within Flood Modeller.

UC005: Update Weir Coefficient or Modular Limit Values

1. Select the 'Spill Unit Details' tab and press the 'Table Options' button.



2. Set the Weir Coefficient or Modular Limit values.
3. Press the 'Apply' button to set the node label values on the Spill Unit Details tab.

NB: When the 'Apply' button is pressed a validation method is executed to ensure that the input values are in number form.

